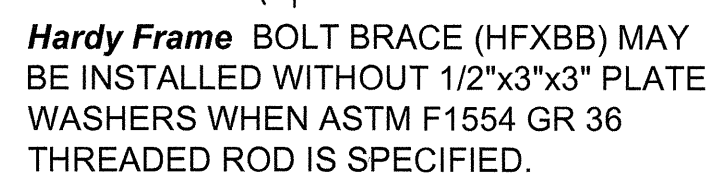


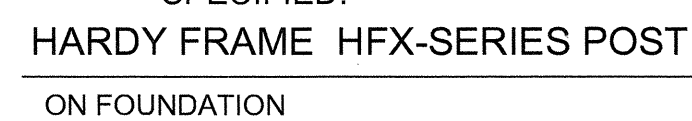
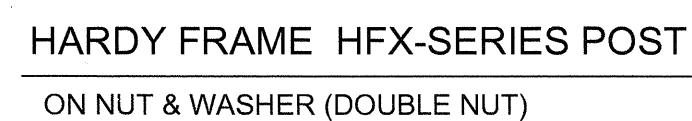
HARDY FRAME HFX-SERIES PANEL
ON WOOD SILL



HARDY FRAME HFX-SERIES PANEL
ON NUT & WASHER (DOUBLE NUT)



- A) If the **Hardy Frame** is to be installed on a mudsill, plot the bottom plate and cut the length to match the width of the Panel. If located next to a door opening, allow the plate to run into the opening.
- B) Set the **Hardy Frame** over the embed bolts and install (1) Hardened Round, (2) Round-Flat, or (2) SAE washers and a Grade 8 hex nut.
- C) Tighten nuts until snug tight.
- D) After framing and plumb & line are complete, install 1/4"x 3" screws through the top of the Panel into the double top plates or header above.

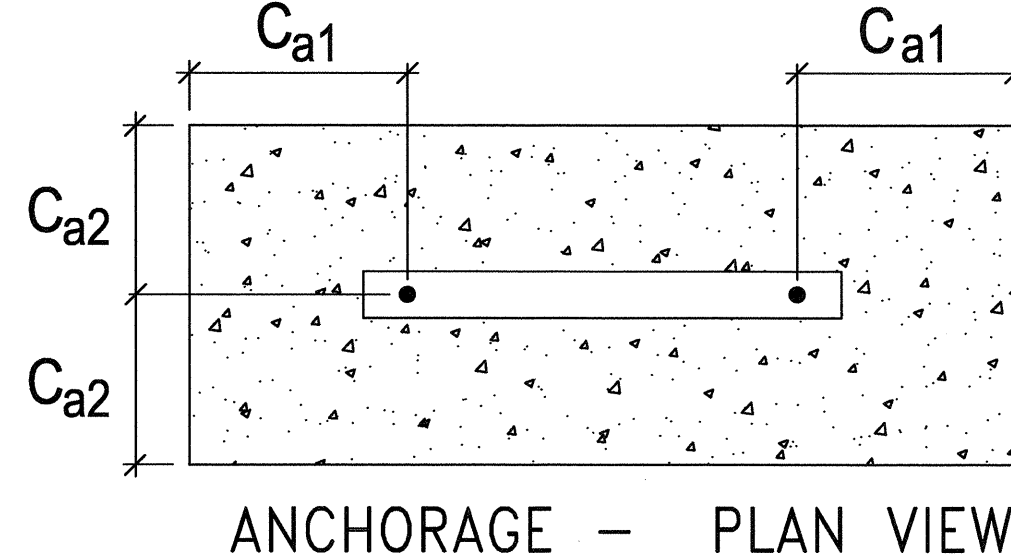


Product Width (in)	Max. Height (ft)	Anchorage (See Nomenclature for Description)		Shear Tie		
				Quantity		Length L ₁ (in)
9	8	1-1/8 STD 12-17	HS NA	1	1	
12	10	1-1/8 STD 14-20	1-1/8 HS 14-20			10-1/2
18	13		1-1/8 HS 20-30			
	20	NA	1-1/8 HS 13-20			
24	13	1-1/8 STD 14-20	1-1/8 HS 20-30		2	21
	20	NA	1-1/8 HS 18-27			

- HARDY FRAME* 2009 IBC HOLD DOWN ANCHORAGE TABLE



HARDY FRAME ANCHORAGE AT STEM WALL
STEM WALL ELEVATION



1-1/8 - STD -14 -20

Ca1 ,Ca2
le
ROD GRADE
ROD DIAMETER

I_e = LENGTH OF EMBED
 C_{a1} , C_{a2} = END & EDGE DISTANCE